

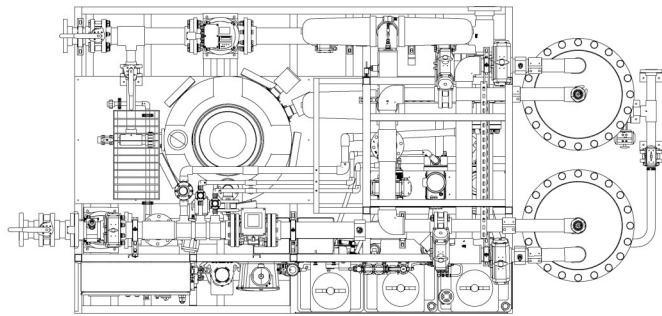


C²-UF 200 System Specification Sheet

The C²-UF product line from Clean Membranes offers the world's most compact, packaged ultrafiltration (UF) systems. The integrated, highly innovative **Gigamem[®] UF240** module from Polymem contains a large membrane surface area, which enables the system's high production capacity within a remarkably small footprint.

The 24" OD **Gigamem[®] UF240** module houses **52 individually replaceable fiber bundles** for a total of 5,813 ft² of membrane surface area. **Gigamem[®] UF240** modules operate in outside-in, dead-end filtration mode. Each bundle can be independently installed, inspected, repaired, or replaced if necessary, thereby overcoming the complications typically associated with large filtration modules.

The C²-UF 200 is a partially skid-mounted treatment system with two free-standing modules; it requires only electricity, water connections, air, and a backwash tank in order to operate.



Schematic of the C²-UF 200 system with two Gigamem[®] UF240 modules.

C²-UF 200 System Connections

Key Tie-In Points		Line Size
1	Inlet (Feed)	DN4"
2	Outlet (Filtrate)	DN4"
3	BW Waste	DN4"
4	Drain (Waste)	DN2"

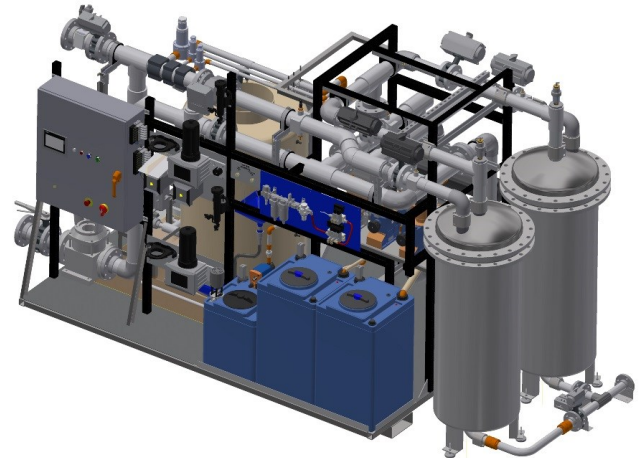
C²-UF 200 System Dimensions

Length	180"
Width	84"
Height	94"

All dimensions in this table are approximate.

Contact Clean Membranes for more information.

©2018 Clean Membranes. All rights reserved. Rev 6.22.18



The C²-UF 200 system features two of Polymem's compact Gigamem[®] UF240 modules.

C²-UF 200 System

Max. Instantaneous Flow Rate	285 gpm*
Max. Daily Production	375,000 gallons*
Max. Inlet Pressure	58 psi
Max. Backwash Pressure	36.2 psi
Max. Filtration TMP	21.7 psi
Operating Temperature	32-104 °F
Cleaning pH Range (CEB & CIP)	2-11
Membrane Material	Neophil™ PVDF
Pore Size (nominal)	0.025 μm
Power Supply	460 VAC, 3-phase
Cleaning Chemicals	NaOCl, acid, base
Cleaning Frequency	Water quality dependent*

*Production, cleaning frequency, and cleaning protocol will vary based upon operating conditions. See operating manual for additional information.

Membrane Performance

Outlet Turbidity	< 0.1 NTU
Outlet SDI ₁₅	<< 3
Bacteria Reduction	> 6 log
Virus Reduction	> 3 log